

Shabbat and other services are held in our new synagogue, 809 4th Ave, Tuscaloosa, AL



TEMPLE EMANU-EL BULLETIN

Friday Erev Shabbat 6:00 pm & other Services

<i>Date</i>	<i>Parshat</i>
Aug 3	Va'etchanan Deut 3:23-7:11
Aug 10	Eikev 7:12-11:25
Aug 17	Re'eh Deut 11:26-16:17
Aug 24	Shoftim Deut 16:18-21:9
Aug 31	Ki Teitzei Deut 21:10-25:19
Sept 7	Ki Tavo Deut 26:1-29:8
Sept 14	Nitzavim Deut 29:9-30:20
Sept 21	Vayalech Deut 30:21-31:1
Sept 28	Ha'Azinu Deut 32:1-32:52
Oct 5 (Sukkot)	Ex 33:12-34:26 & Num 29:17-25

Other Events

Sun, Aug 5, 10 am: Religious Sch, Committee Mtg, library

11 am: Temple Board Meeting in the library

Sun, Aug 19, 10 am: Religious School meeting with ISJL fellows

Sun, Aug 19, 11 am: Sisterhood Brunch and meeting (please bring dish)

Aug 17=Rosh Chodesh Elul

Wed., Sept 5, 4 pm: First Hebrew class

Sun, Sept 9, 10 am: First Day of Religious School

Sept 16: No Religious School

Sun, Sept 23 & 30, 11 am: Torah Study

High Holidays Schedule:

Sun, Sept 16, 8 pm: Erev Rosh Hashanah services and Oneg following

Mon, Sept 17, 10 am: Rosh Hashanah Morning Services

1:00: Taschlich at Manderson Landing

Tues, Sept 25, 8 pm: Erev Yom Kippur

Wed, Sept 26, 10 am to Concluding: Yom Kippur services, followed by Break-The-Fast courtesy of Sisterhood

See also Aug-Sept calendar on page 3

www.shalomtuscaloosa.com
templemanuel.tuscaloosa@gmail.com

Temple Emanu-El Tuscaloosa AND Sisterhood of Temple Emanu-El are now on **FACEBOOK!** Please go there and "like" us. And watch both for special events.

Temple Emanu-El 809 4th Ave Tuscaloosa, AL 35401 (205) 759-3230
Steven L. Jacobs, Rabbi Hattie Kaufman, Anna Singer, Co-Presidents
August 2012 Av-Elul 5772

From Rabbi Jacobs



Dear Friends:

Ere too long—September 17th—we will again gather together again to celebrate the dawn of a new Jewish year. For some of us, this past year has been one of celebration and joy, and we are delighted to share this with each other. For others among us, this past year has been one of sadness and, yes, perhaps even tragedy, and we have been there for each other through these dark days. Thus the wisdom of our Talmudic rabbis reminding us that "all beginnings are hard," for we are again approaching our collective new beginning.

The challenge before us, both individually and collectively, is not to remain frozen in either the joys of the past or its tragedies. The challenge is to energize ourselves as we look into our future and realize that the potential for meaningful engagement with each

(continued on page 2)

Temple Dues commitments for 5773 are due. Did you know dues only cover 68% of our operating expenses? **See p. 4**

A Membership Form is in this bulletin. **We need one from every household even if you've been a member for years!**
SEE pages 11-12

High Holidays

Floral Fund: send your contributions in memory or in honor of loved ones to: Diane Brown, 960 Germantown Rd, Tusc. 35406 **See p. 5**

YEARBOOK:

Send any changes of address, phones, cell phone, kids, etc. to: annajsinger@hotmail.com

MEMORIAL LINES: You have received an e-mail asking if you want to renew the memorial names in the yearbook.

YEARBOOK ADS: For just \$30 you can have a quarter-page ad that will be seen all year. Send New Year greetings, or advertise your business! We'll do the setup! E-mail Pam DeWitt, kdewitt@comcast.net or Amy Ahmed, amyc.ahmed@gmail.com

Religious School!

starts on Sept. 9th with the new ISJL curriculum. A great year lies ahead. See page 6

From the Rabbi, continued:

other and with our world remains a vast untapped resource waiting to be unleashed. What we will do with our minutes, hours, days, weeks, and months in the year to come is up to each of us.

My prayer is that we will each use the time to come during this new year to make the most of it so that when the next Rosh Ha-Shanah confronts us a year from now, we will be able to look back, smile, and say: "Thank You G-d for the privilege of life itself and what, with Your help I have been able to accomplish these past twelve months."

From our house to yours,
Shalom, joy, and blessings,
Rabbi Steve Jacobs

The University of Alabama Department of Religious Studies, 212 Manly Hall Box 870264, Tuscaloosa, AL 35487-0264 (205) 348-0473 Fax (205) 348-6621 E-mail sjacobs@bama.ua.edu Website www.as.ua.edu/rel

From the Co-Presidents

Temple members are working feverishly (not just because of the summer heat!) to get Temple Emanu-El ready for the fall. The High Holidays are coming up fast.

We want to extend special thanks to **Amy Ahmed and Pam DeWitt**, who have taken over Sisterhood on a wing and a prayer, and have planned a spectacular year for all of us.

Also, **Ella Rosen and the entire Religious School Committee** has worked very hard this summer and we're looking forward to a special school year for all our children.

5773 is looking like it'll a great year for Temple Emanu-El of Tuscaloosa. Hope to see all of you at as many services—and social events—as possible.

—Hattie Kaufman and Anna Singer

Temple Emanu-El of Tuscaloosa, Inc.

809 4th Ave., Tuscaloosa, AL 35401 (205) 759-3230

templemanuel.tuscaloosa@gmail.com

www.shalomtuscaloosa.com

Copyright © 2012, Temple Emanu-El of Tuscaloosa, Inc.

ALL RIGHTS RESERVED

Officers

Co-Presidents+Co-Vice Presidents:

Hattie Kaufman, Anna Singer

2nd Vice President.: Ron Hood

Secretary: Ella Rosen

Treasurer: Marcy Weinberger

Corresponding Secretary: Lisa Whitehead

Parliamentarian: Joel Whitman (Immediate Past President)

Board of Trustees:

Kevin Besnoy, Baila Block, Howard Brown, Becky Caudill, Doris Chernau, Ken DeWitt, Pam DeWitt, Betty Jo Goldstein, Chet Goldstein, Greg Goldstein, Teddy Katz, Paula Quarles, Allen Rosen, Diana Schwab; Murray Silverstone, also current Sisterhood & Men's Club representatives.

Honorary Life Board Members:

Ruth Applebaum, Doris Cohen, Gordon Rosen

Temple Committees and Chairs:

Adult Education: Shari Augins, Doris Chernau, Diana Schwab

Caring / Sunshine: see Sisterhood

* *Building Management:* Teddy Katz, Chet Goldstein, Anna Singer

* *Finance:* Ken DeWitt

Fundraising:

Jewish Film Festival: Paul Horwitz

* *Membership:* Pam DeWitt

Men's Club President: Jason Fleishman

Mitzvah / Social Action: Shari Augins, Betty Lichstein

Recycling: Diane Brown, Marianne Rosenzweig, Anna Singer

Personnel: Howard Brown, Co-Presidents

* *Religious School:* Ella Rosen (Rebecca Rothman, administrator, Wendy Goldstein, Parent-on-Duty coordinator)

* *Ritual, Music, and Cemetery:* Becky Caudill

Sisterhood Co-Presidents: Pam DeWitt & Amy Ahmed

Social & Programs: Betty Jo Goldstein, Co-Presidents

University Relations:

* = elected chairs of standing committees

Aug-Sep 2012 Temple Emanu-El of Tuscaloosa Av-Elul 5772-Tishrei 5773

Sunday	Monday	Tuesday	Wednesday	Thursday	Friday	Saturday
July 29 Tisha B'Av	30	31	Aug 1	2	3 6:00 erev Shabbat service	4 Parshat Va'etchanan
5 10—Temple Board Meeting	6	7	8	9	10 6:00 erev Shabbat service	11 Parshat Eikev
12	13	14	15	16	17 6:00 erev Shabbat service	18 Parshat Re'eh
19 <i>Rosh Chodesh Elul</i> 10-Rel.Sch committee mtg ISJL fellows 11-Sisterhood Welcome Mtg & brunch	20 City schools start	21	22 UA classes start	23	24 6:00 erev Shabbat service	25 Parshat Shoftim
26 10-RS teacher orientation	27	28	29	30	31 6:00 erev Shabbat service	Sept 1 Parshat Ki Titzei
2	3	4	5 4-First Hebrew class	6	7 6:00 erev Shabbat service	8 Parshat Ki Tavo
9 10-first day Rel. Sch.	10	11	12	13	14 6:00 erev Shabbat service	15 Parshat Nitzavim
16 (no Rel. School)- 8 pm—Erev Rosh Hashahah Oneg follows	17 <i>Rosh Chodesh Tishrei</i> 10:00 Rosh Hash. Torah serv. 1:00 Taschlich, Manderson Landing	18	19	20	21 6:00 erev Shabbat service	22 Parshats Matot & Masei
23 11-Torah Study in the library	24	25	26	27	28 6:00 erev Shabbat service	29 Parshat Devarim erev Tisha B'Av
30 11-Torah Study in the library	Oct 1	2	3	4	5 6:00 erev Shabbat service	6

The Temple

Treasury Notes

Thanks to all for promptly paying your dues for the past year and to the Temple leaders for doing a great job of running a very lean operation.

Did you know your dues cover only 68% of the Temple's operating expenses? You made up the difference through your generous (non-building fund) donations last year. Let's keep up the good work and consider increasing our donations for this year. We haven't raised dues!

Please send your checks to Treasurer, Temple Emanu-El, 809 4th Ave, Tusc. 35401. Indicate "dues" or other item, such as "donation" on the memo line.

Your Board

The meeting on June 24 welcomed a new board and group of officers, and appointed Murray Silverstone to the board. He will be overseeing the new website.

We will be using the 'old' High Holidays sid-durs this year, but will consider buying copies of a new one during the coming year.

We will be issuing High Holidays tickets to members in good standing.

The board unanimously approved conferring life memberships on Gordon Rosen, Doris Cohen, and Ruth Applebaum. All have given 50 or more years of service to Temple Emanu-El.

A membership form will be collected from all members, regardless of present status as members. Our records have become out of date, and the board agreed that we needed to have good information on file.

About the Membership Form

All households which have not submitted a membership form are asked to do so now. This is not the same as the 'interest form' that some filled out at the annual meeting.

Please see **pages 11-12** for the form, which you can mail in or drop off at the Temple.

Wish List

Now is the time to help out with the playground—Lisa Besnoy is heading up this effort. Send donations to Treasurer, 809 4th Ave, Tuscaloosa, 35401, and mark the check 'playground' Thanks!

The Sisterhood Schmooze

Hi Everyone! It's Amy and Pam

We are so excited to be the Co-Presidents for Sisterhood this year. We've met a lot over the summer and think we have a fun and educational year planned. Of course, we always need your help and hope you can assist at certain times of the year.

Let's begin-

Yearbook:

We are currently working on producing the Yearbook for 2012-2013 and need a tiny bit of your help:

Please forward any changes you might have with your name, address, phone numbers or email to Anna Singer. Please print and fill out the **Memorial page** (next page) and send it with your check to Pam DeWitt, 600 Northshore Dr, 35406 if you choose to purchase a Memorial line for a loved one.

We are selling **ads for the yearbook** and have a wonderful idea how you can make this book, that we refer to all year, more special. Buy an ad! All ads will be ¼ of a page and cost \$30. You can place an ad for your business or a special note to your child like they do in the school yearbooks. Businesses—our yearbook is used by all of us throughout the year. Having your ad seen on a regular basis is great for business and we'll even do your ad for you!

All information is due by Sept. 1st with no exceptions. Yearbooks will be handed out during Rosh Hashanah. Additional copies can be purchased for \$5. Let us know if you have any questions!

First Sisterhood Meeting:

Sunday, August 19th at 11:00 am at the Temple. We will begin with brunch and have the pleasure of hearing from our ISJL Fellow- Sam Kahan. She will briefly discuss the ISJL program and how she will be assisting us in the Religious School. We will proceed with our meeting and discuss the upcoming year. Bring your checkbook—get those dues out of the way. Also you will want to look over the ...

Coupon Books! The Sisterhood will be selling **Enjoy the City** coupon books again. They will cost \$20, and include four \$5-off Winn-Dixie coupons, that can also be used at Publix. Among the other hundreds of coupons are "buy one get one free entree" at Ruan Thai, and "buy one lunch and get one free" at Surin. \$8 of each purchase is a donation to Sisterhood. Books will be available at the first Sisterhood meeting on Aug. 19, or thru Marianne Rosenzweig, Pam Dewitt, & Amy Ahmed after Aug. 19.

Floral Fund for the High Holidays

Please send your contributions for High Holiday flowers in memory of loved ones to Diane Brown, 963 Germantown Rd., Tuscaloosa, AL 35406

We're on Facebook

Please become our friend on Facebook- Sisterhood of Temple Emanu-El Tuscaloosa.

We will post events and tidbits on a regular basis.

And COMING UP . . .

Spaghetti Dinner & Bingo

Guess what? Something new! Thursday, October 18th will be our first Spaghetti Night Dinner and Bingo with prizes!

We'll start serving dinner at 5:00 , but come and eat when you please. Eating while you're playing Bingo, which starts at 6:00, is fine too. Dinner includes spaghetti with marinara or meat sauce, salad, garlic bread, dessert and a soft drink. \$10. for adults and \$5. for children 12 and under. Wine and beer will be extra, but only \$3. each. Bingo cards will be \$2 a card. So, join us from 5:00 pm to 8:00 pm and see if you'll be one of the lucky ones yelling "BINGO" and walking out with a prize that night.

Garage Sale

Sisterhood will be holding a **garage sale** on Saturday, October 6th at Pam DeWitt's home, 600 Northshore Drive. **CLEAN OUT THOSE CLOSETS !** We need your items. You can drop off your treasures at Pam's house beginning Thursday, Sept. 27th through Wednesday October 3rd. Place your items anywhere in the garage if the door is open. If the garage door is closed, please leave them in the driveway by the garage. Thanks in advance for making this important fundraiser a success!

Well, we've given you a taste of what we have been working on. There are several other fun events we will share with you as they get closer. One hint—P PARENTS--get ready for a **Parents Night Out** coming in December. Sisterhood members, please don't forget about the meeting August 19th at the Temple. An email reminder will be sent. You will receive a Calendar of Events and meeting schedule on that day.

And to everyone, thank you for allowing us to be your Co-Presidents of Sisterhood. It has been fun learning our way and hope that you will all be at our side throughout the year. Bye for now!

Amy and Pam

Memorial Lines

Please publish the following memorial lines in the 5773/ 2112-13 Temple Emanu-El Yearbook:

I enclosed a check made out to Sisterhood of Temple Emanu-El for \$9 x # of lines, for a total of \$ _____

Your name: _____

Address: _____

Mail check to: Pam DeWitt, 600 Northshore Dr., Tuscaloosa, AL 35406

Yearbook Ads:

I wish to purchase an ad for the 5773/ 2112-13 Temple Emanu-El Yearbook @ \$30 per ad
WE'LL FORMAT YOUR AD

Examples of copy:

Congratulations Jane Doe for making cheerleader at City High for the 2012-13 school year
We're so proud of you!

Happy New Year
From the
Doe Family,
John, Jessie, Jane and Joey

Dr. John Doe
Internal Medicine
1234 Main St. City, State
555-1234

Please publish the following copy as an ad in the 5773/ 2112-13 Temple Emanu-El Yearbook:

I enclose a check for \$30 per ad made out to Sisterhood of Temple Emanu-El.

Your name: _____

Address: _____

Mail check to: Pam DeWitt, 600 Northshore Dr., Tuscaloosa, AL 35406

Education

Religious School

Religious School Calendar for Fall 2012:

(Sat-Sun August 18-19 / RS committee's first visit with ISJL fellow - no youth programming)

(Sunday, August 26- RS teacher workshop 10am-noon)

Sunday, Sept 9 – First day of Sunday School / parents meeting & coffee (required for all RS parents)

Sunday Sept 16 – NO SUNDAY SCHOOL – But see you at Erev Rosh Hashanah services 8pm!

Sunday Sept 23 – Sunday School

Sunday Sept 30 - Sunday School (& parents: help us BUILD THE SUKKAH!)

Friday Oct 5 – Sukkah Shabbat! Services followed by a Pizza dinner in the sukkah

Sun Oct 7 – Nov 11: Sunday School

Nov 18 & 25 – No Sunday School for Thanksgiving break

Sun Dec 2 – Sunday School

Sun Dec 9- Sunday School, Chanukah Party & Play

MEN'S CLUB

Men's Club will resume meetings in the fall. All Jewish men are welcome.—Jason Fleishman, President

JEWISH BOOK GROUP

We're an informal group of addicted book-readers, and try to pick titles that have some relationship to Jewish life or history. Feel free to join us; please bring your own lunch!

The book for August is *The Hare With the Amber Eyes* by Edmund Seward. The meeting is Monday, August 27th at noon at the Temple.

I hope to see you at the meetings. We have some interesting discussions, especially if there are differences of opinions. E-mail or call me for further information.—Shari Augins (fgpsa@hotmail.com, 759-4105)

Preschool

Preschool will meet on every Sunday that Religious School is in session.

Teen Torah Group

Teen Torah will meet at noon on every Sunday that Religious School is in session.—Rebecca Rothman

Adult Education

Torah Study will meet on the following Sundays in the fall: 23, 30 September; 7, 14 October; 4 November; 2, 9 December

"**Stepping Stones**" will resume meetings in the fall. The program is a Jewish family education program sponsored by Religious School; Marianne Rosenzweig is the facilitator.

Mitzvah

GEN. 18:6-7: *Is not this the fast that I have chosen: to unlock the shackles of injustice...to let the oppressed go free... Surely it is to share your bread with the hungry, and to bring the homeless poor into your house.*

Meals on Wheels

We will need volunteers for the summer. Please call Becky Caudill at 333-3136 or e-mail her at whom57ever@mail.com

High Holidays (and year-round) food drive

The basket for High Holiday donations to **WEST ALABAMA FOOD BANK** stays in a corner of the lobby. You can bring in canned goods (or checks) and leave them there any time. There is also a basket for hotel toiletries (and/or checks), to be donated to **TURNING POINT**. Thanks to **Shari Augins and Betty Lichstein** for these mitzvot.

Recycling

Thanks to **Nettie Blume, Hattie Kaufman, Barbara Hood, and Rebecca Rothman** and other friends of the Temple who drop off their **newspapers, magazines, and aluminum cans** at the Singer home, 903 20th Ave. Other drop-off points: Diane Brown, 963 Germantown Rd 35406, and Marianne Rosenzweig, 1701 Dearing Place, 35401.

JUAF (Jewish United Appeal Fund)

Game-Day Parking Passes: a JUAF fundraiser

Again this year, **the Temple-Hillel parking lot will be available for home games**. Season hangtags will be mailed in early August to subscribers. Because of staffing issues, the lot will **open four hours before kickoff, and close 1 hour before kickoff**. We have no idea what kick-off times will be—they are set by TV schedules close to game time. Watch your news source for kickoff times.

If you want a game-day hangtag, please fill out this form and send it with your check to: JUAF treasurer, 903 20th Ave, Tuscaloosa, 35401. The price is \$30/per game x 7 games + \$4 postage and handling, or \$214.

Name(s) _____ e-mail: _____

Street/City/State/Zip: _____

Home Phone: _____ Cell(s): _____

Auto--make, model, state, license: _____

Alternate Auto—make, model, state, license: _____

Any other information you feel we should know:

Please mail form with check for \$214.00, made out to **JUAF**, to: JUAF Treasurer, 903 20th Ave., Tuscaloosa, AL 35401

Congregational News

Mazel Tov

Albert Oppenheimer, son of **Bonnie Oppenheimer**, received his Sistema Fellowship certificate in May from the New England Conservatory of Music, where he also earned his bachelor's and master's degrees. He has accepted a job with the People's Music School in Chicago. Kate Oppenheimer, Bonnie's daughter, earned her A.B. in history from the University of Chicago in June. She will continue her job at Insight Illinois in Chicago. (They are sharing an apartment.)

Amy and Brian Ahmed celebrated the grand opening of the new **Full Moon Barbeque** store which they have worked hard to rebuild since the old store was leveled by the April, 2011 tornado. They are ecstatic about the beautiful new building. Stop by—it's on the west side of McFarland near 15th St, across from the location of the old store and next to where Krispy Kreme sat before the tornado.

Caryn and Shahar Dillbary welcomed a new addition, Naomi Ruth, on June 27th. All are doing well.

August Happy Birthdays

1 Norman Singer
13 Adena Whitman

August Anniversaries

5 Becky and Pat Caudill's 25th!

We'd like to note birthdays and anniversaries for our congregants in each bulletin. Send your family's birthdates (month/date/year or skip the year if you prefer) and anniversary dates to: annajsinger@hotmail.com

Special Thanks This Summer to:

Pam DeWitt and Amy Ahmed, for a monumental effort getting Sisterhood ready for the fall rush.
Great Work!!!

Ella Rosen and the Religious School committee for much hard work getting the new Religious School structure in place. Especially to Ella for attending the ISJL conference on short notice.

To the new Officers and Board for meeting over the summer to get us ready for 5773.

Rabbi Jacobs for being available for nearly every Erev Shabbat this summer.

Donations

If not me who? If not now, when?—Hillel

To the Temple General Fund:

Becky and Pat Caudill, in honor of Morgan DeWitt's volunteer work with Religious School

Becky and Pat Caudill, in honor of Joel Whitman's contributions to the Temple.

From Marcy Weinberger in memory of Leon Weinberger

From Norman and Anna Singer in honor of the new Temple board.

To the Temple Building Fund:

From Doris Chernau

In kind to the Temple:

A challah tray was donated to the Temple in honor of Joel and Toby Whitman by board members Teddy Katz, Ella Rosen, Rebecca Rothman, Diana and Steve Schwab, Norman and Anna Singer and Marcy Weinberger. The tray was inscribed:

*In honor of Joel Whitman, President, 2008-2012
and in memory of Toby Whitman, Co-President.*

A kiddush cup was donated anonymously in honor of Larry Fagen's service as treasurer.

A vase was donated anonymously in honor of Ron Hood's six years of service as president of the Temple.

To the Sisterhood:

None reported this month

To the Rabbi Support Fund:

None reported this month

To the Rabbi's Discretionary Fund:

None reported this month

To the Temple Prayerbook Fund:

None reported this month

To the Temple for the new playground:

Anna and Norman Singer have made a contribution to help purchase new playground equipment

To Sisterhood Tree of Life Fund:

From Baila Block, for the speedy recovery of Joel Whitman

From Baila Block, for the speedy recovery of Gerson May, brother of Betty Jo Goldstein

To the Religious School:

None reported this month

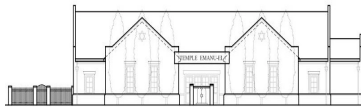
Please send all Temple donation and commitment checks to Treasurer, Temple Emanu-El, 809 4th Ave., Tuscaloosa, AL 35401

Please send Sisterhood Tree of Life donations to Baila Block, 844 Pinemont Dr. N, Tuscaloosa, AL 35406

Please send other Sisterhood donations and commitment checks to: Marianne Rosenzweig, 1704 Dearing Pl, Tuscaloosa, AL 35401

Please send JUAF donations to Treasurer. JUAF, 903 20th Ave, Tuscaloosa, AL 3540

PLEASE
FILL OUT
BOTH PGS
11+12 AND
RETURN
TO TEM-
PLE
EMANU-EL



Temple Emanu-El
809 4th Ave., Tuscaloosa, AL 35401
E-mail: templemanuel.tuscaloosa.com
Phone: 759-3032 Fax: 759-3131

Application for Membership

Welcome to Temple Emanu-El. EVEN IF YOU ARE A LONG-TIME MEMBER, PLEASE FILL OUT BOTH SIDES OF THIS FORM. Please call the synagogue office or email us if you have any questions or need assistance. We look forward to getting to know you and hope your experience with Temple Emanu-El will be positive.

Personal Information:

	Adult Applicant 1 _____ male _____ female	Adult Applicant 2 _____ male _____ female
Full Name(s)	_____ <input type="checkbox"/> Mr <input type="checkbox"/> Mrs <input type="checkbox"/> Ms. <input type="checkbox"/> Dr. <input type="checkbox"/> Other:	_____ <input type="checkbox"/> Mr <input type="checkbox"/> Mrs <input type="checkbox"/> Ms. <input type="checkbox"/> Dr. <input type="checkbox"/> Other:
Nickname or preferred name(s)		
Personal Status	<input type="checkbox"/> Single <input type="checkbox"/> Married _____(date) <input type="checkbox"/> other	<input type="checkbox"/> Single <input type="checkbox"/> Married _____(date) <input type="checkbox"/> other
Birthdate(s) (year is optional)		
Newcomers only: former congregation, city, state		
Special Accommodations needed? If yes, please state what they are. <i>Example: Need large print siddur</i>		
Hebrew name (If you do not have one, please tell us if you would like one).		

Names, birthdates, and school grades of children in household	
I (we) are interested in receiving information about	<input type="checkbox"/> Religious School <input type="checkbox"/> Adult Education <input type="checkbox"/> WRJ Sisterhood <input type="checkbox"/> Men's Club <input type="checkbox"/> Pending B'nai Mitzvah <input type="checkbox"/> Conversion <input type="checkbox"/> Temple governance <input type="checkbox"/> Other:

PLEASE GO TO NEXT PAGE

Contact Information:

Name(s) _____
 Street/City/zip: _____
 Mailing Address if different: _____
 Home phone: _____ Fax no: _____ Office phone(s) _____
 Cell phone (applicant 1) _____ Cell phone (applicant 2) _____
 Email (applicant 1) _____ Email (applicant 2) _____
 I (we) would like to receive synagogue communications via email. (applicant 1) yes no (applicant 2) yes no

Professional Information

	Adult Applicant 1	Adult Applicant 2
Occupation/Title		
Employer/ retired		

Yahrzeit Information

Name:	Date of Death (before/after sundown) (Specify if date is from secular or Hebrew calendar)	Family Relationship	Name is already on a Temple Emanu-El Memorial Plaque (yes/no)

Please attach a separate sheet for additional yahrzeit names. I would like information about memorial plaques

Emergency Contacts (ex: adult children)

Name	City/State	Phone(s)

I (we) wish to apply for membership in Temple Emanu-El of Tuscaloosa, AL. in one of the following categories:

- Family (\$1200/year) Single (\$600/year) Senior family (age 65+) (\$900/year)
- Associate (for those with full membership in another synagogue) (\$350/year) Name and address of synagogue in which you have full membership: _____
- Currently enrolled student (complimentary)

Our fiscal year is September 1-August 31. *Newcomer membership may be prorated at the Board's discretion if arrival is on or after March.*

I (we) agree to be billed for dues Annually Quarterly Monthly (e-mail only)
 and understand that arrears may, at the discretion of the Board, result in loss of membership privileges.

PLEASE READ THE FOLLOWING CAREFULLY: Temple Emanu-El is a Reform Jewish congregation, affiliated with the Union for Reform Judaism. We welcome Jewish individuals, and families with at least one Jewish adult, who identify with any of the branches of Jewish practice, whether Reform, Conservative, Orthodox, or Reconstructionist. While all are welcome to attend our Sabbath services, we cannot offer membership privileges to those who identify with Messianic Judaism.

I (we) agree to the terms stated above

Signed (APPLICANT(S)) _____ Date: _____

Co-signed (BOARD-DESIGNATED REPRESENTATIVE OF TEMPLE EMANU-EL) _____

Yahrzeits

*Names of those who have died in the last 12 months,
to be read at each service:*

Annie Ruth Bellenger, 8/20/11
Sylvia Steiner Aaron, 8/24/11
Leon J. Weinberger, 9/5/2011
Karen Steckol, 11/5/2011
Ruth Carlin, 11/25/2011
Alan Sterling, 12/14/2011
Sarah Lichstein, 12/19//11
Judith Morton Mayer 4/22/12

July 27

Henry (Harry) Lipson Jr. 07 21 2006
Maurice Hodges 07 22 1968
Harry Whitman 07 23 0001
Jacob Hodges 07 24 1976
Ettie Frank 07 24 2008
Frederick M. Tauber 07 25 1974
Rachel Weinberger 07 25 1974
Nanette Bower 07 25 1987

Aug 3

Edgar Fleck 07 29 2006
Irving Hirsch 07 30 1986
Morris Hyman 07 30 1986
Adrian Goldstein 08 01 2006

Aug 10

Bernard Pizitz 08 05 1940
Sadie Siegal 08 05 1968
Stan Siegal 08 06 2003
Helen Rich 08 09 1993

Aug 17

AaronWallenberg Miller 08 11 2003
Marilyn Bernatz 08 12 0001
Ethel Temerson 08 14 1974
Howard Stuart 08 14 1988
Morton Jerome 08 15 1965
Jerome B. Morton 08 15 1965
Rose Rich 08 15 1970
Sara Rosen 08 16 1985
Florine Jacobs Trachtenberg 08 16 1986
Gertrude Gordon 08 16 1989
David Karasak 08 17 0001
Esther Siegal 08 17 1987
Jacqueline Drexler 08 17 2007

Aug 24

Ida Rich 08 18 1960
Kenneth Warner 08 19 2008
Hanna Fink 08 20 1988
Annie Ruth Belenger 08 20 2011
Sadie Berman 08 21 0001
Louis Rosenfeld 08 21 0001
Abe Temerson 08 21 1972
Edward Siegal 08 21 1995
David Stein 08 22 0001
Sylvia Aaron 08 24 2011

Aug 31

John Cohen 08 26 0001
Joanne Gardner 08 30 1995
Leon Weinberger 09 05 2011

Sept 7

None

Sept 14

Sidney Trachtenberg 09 10 1991
Anna Cheimetz Singer 09 10 1999
Alice Gordon 09 12 1995
Lynn Rosoff 09 13 1995
Esther Bloom 09 14 0001
Iris Denaberg Rosemore 09 14 1991

Sept 21

Alex Kartzinel 09 15 1954
Stefan Schwartz 09 15 2002
Florence Block 09 16 1972
Aaron Jacobs 09 19 1969
Selma Kaplan 09 20 1995
Simon Wiesenthal 09 20 2005
Mary Stoler 09 21 1974

Year-Round Donation Form

Your Name, Address, City, Zip:

Please accept my contribution In honor of _____

In memory of _____

TEMPLE

send contributions for all Temple funds to Larry Fagen, Treasurer, 809 4th Ave, Tuscaloosa, AL, 35401

- Temple General Fund
- Building Fund
- Memorial Fund
- Rabbinical Fund
- Pizitz Choir Fund
- Library Fund
- Estelle Weinberger Collection Fund
- Rabbi's Discretionary Fund
- Rosemore Religious School Fund
- Prayerbook Fund

(Name(s) to be placed in book:

SISTERHOOD

Sisterhood Tree of Life Fund. send contributions for the Tree of Life Fund to Baila Block, 844 Pinemont Dr, N. Tuscaloosa, 36406,

Floral Fund for the High Holidays. send contributions for the Floral Fund to Diane Brown, 963 Gerrnantown Rd, Tuscaloosa, 35406

Sisterhood General Fund. send contributions for the General Sisterhood Fund to Marianne Rosenzweig, 1704 Dearing Place, Tuscaloosa, AL 35401

Temple Emanu-El of Tuscaloosa

809 4th Avenue
Tuscaloosa, AL, 35401

templemanuel.tuscaloosa@gmail.com

If you have questions, comments,
or information you would like to include
in the bulletin, please e-mail
annajsinger@hotmail.com

Celebrating Judaism in
Tuscaloosa, Alabama



UNION FOR **MEMBER**
REFORM JUDAISM

האיחוד ליהדות רפורמית
SERVING REFORM CONGREGATIONS IN NORTH AMERICA